
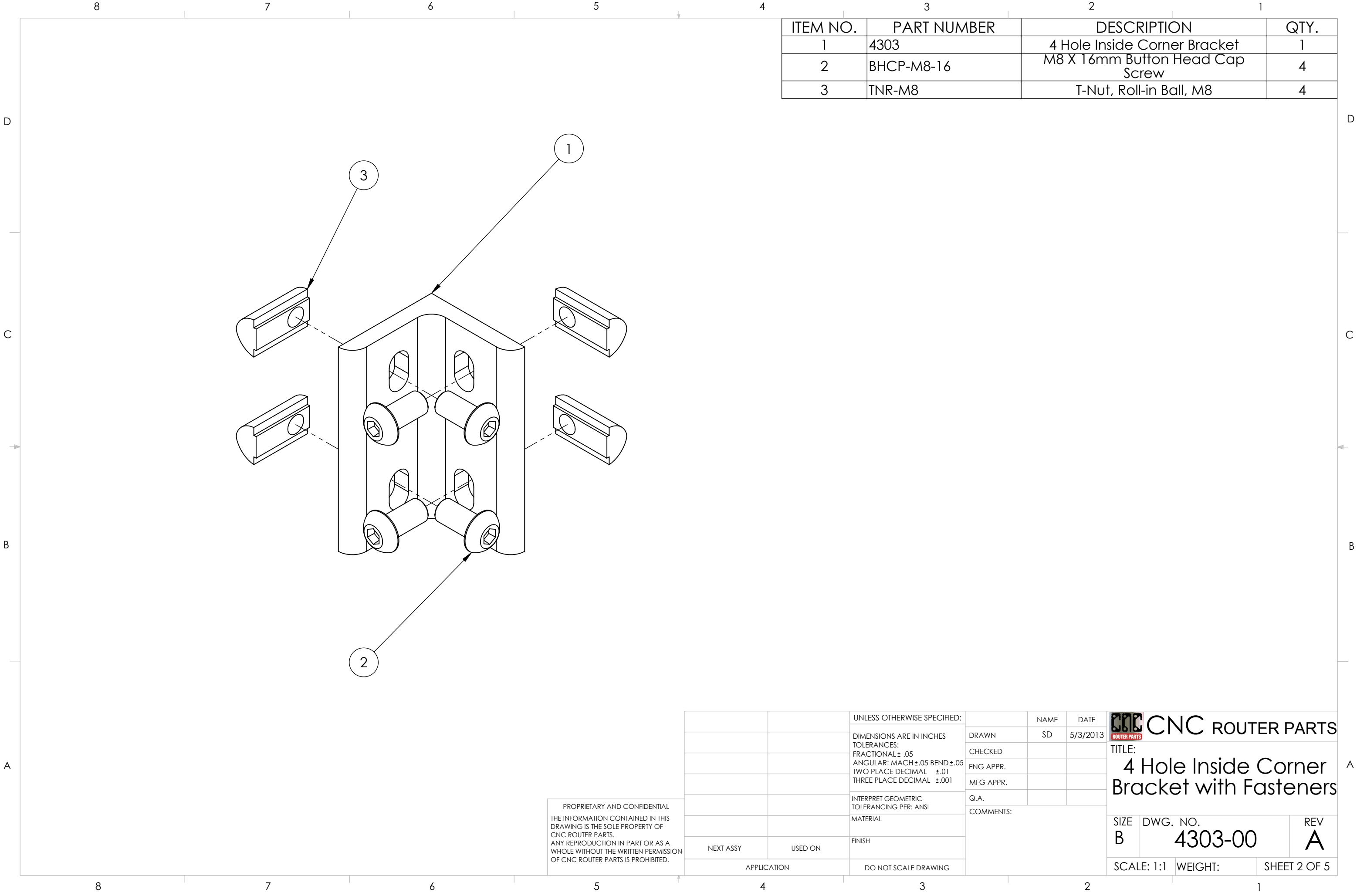


ITEM NO.	PART NUMBER	DESCRIPTION	QTY.
1	4303-00	4 Hole Inside Corner Bracket with Fasteners	8
2	CRP400-01-00-LF	V-Con Rail Clamp Assembly	12
3	CRP412-00	PRO X Axis Bumper Kit	4
4	4080-950	4080 Extrusion, 950mm	2
5	MGW-26	PRO Gear Rack + Fasteners	2
6	1018-100-050-950	1" x 1/2" Steel Rail, 950mm	4
7	4080-1250	4080 Extrusion, 1250mm	3


PROPRIETARY AND CONFIDENTIAL
THE INFORMATION CONTAINED IN THIS
DRAWING IS THE SOLE PROPERTY OF
CNC ROUTER PARTS.
ANY REPRODUCTION IN PART OR AS A
WHOLE WITHOUT THE WRITTEN PERMISSION
OF CNC ROUTER PARTS IS PROHIBITED.

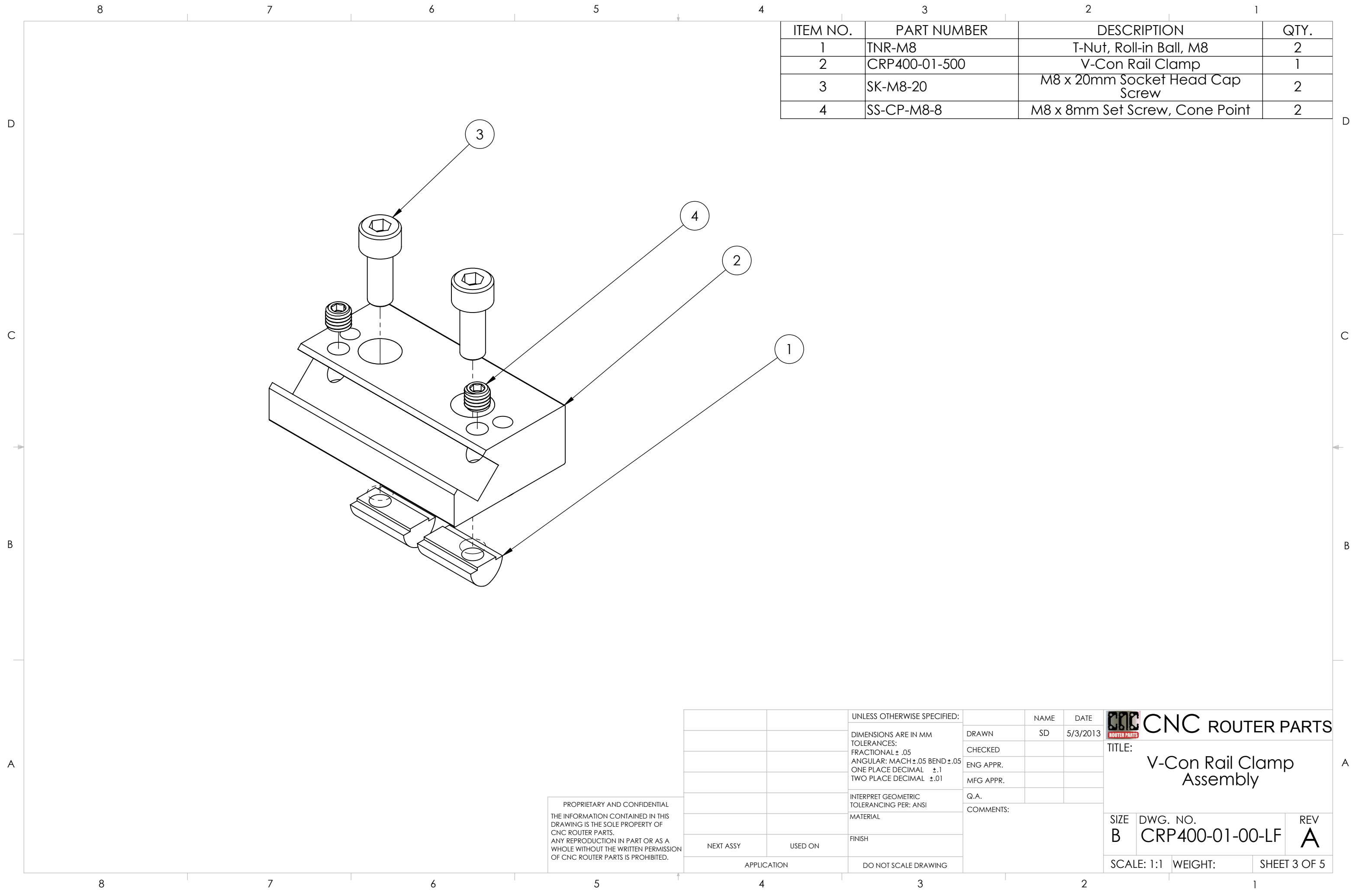
		UNLESS OTHERWISE SPECIFIED:		NAME	DATE	 CNC ROUTER PARTS		
		DIMENSIONS ARE IN MM TOLERANCES: FRACTIONAL ± .05 ANGULAR: MACH ±.05 BEND ±.05 ONE PLACE DECIMAL ±.1 TWO PLACE DECIMAL ±.01	DRAWN	SD	5/3/2013	TITLE: 48" x 24" PRO Base Kit		
			CHECKED					
			ENG APPR.					
			MFG APPR.					
		INTERPRET GEOMETRIC TOLERANCING PER: ANSI	Q.A.			Q.A. COMMENTS:		
		MATERIAL						
NEXT ASSY	USED ON	FINISH				SIZE B	DWG. NO. CRP410-4824	REV A
APPLICATION		DO NOT SCALE DRAWING				SCALE: 1:14 WEIGHT:		SHEET 1 OF 5



ITEM NO.	PART NUMBER	DESCRIPTION	QTY.
1	4303	4 Hole Inside Corner Bracket	1
2	BHCP-M8-16	M8 X 16mm Button Head Cap Screw	4
3	TNR-M8	T-Nut, Roll-in Ball, M8	4


PROPRIETARY AND CONFIDENTIAL
THE INFORMATION CONTAINED IN THIS
DRAWING IS THE SOLE PROPERTY OF
CNC ROUTER PARTS.
ANY REPRODUCTION IN PART OR AS A
WHOLE WITHOUT THE WRITTEN PERMISSION
OF CNC ROUTER PARTS IS PROHIBITED.

		UNLESS OTHERWISE SPECIFIED:		NAME	DATE	<div>CNC ROUTER PARTS</div> <div>TITLE: 4 Hole Inside Corner Bracket with Fasteners</div> <div>SIZE B</div> <div>DWG. NO. 4303-00</div> <div>SCALE: 1:1</div> <div>REV A</div> <div>WEIGHT:</div> <div>SHEET 2 OF 5</div>	
		DIMENSIONS ARE IN INCHES TOLERANCES: FRACTIONAL ± .05 ANGULAR: MACH ± .05 BEND ± .05 TWO PLACE DECIMAL ±.01 THREE PLACE DECIMAL ±.001	DRAWN	SD	5/3/2013		
			CHECKED				
			ENG APPR.				
			MFG APPR.				
		INTERPRET GEOMETRIC TOLERANCING PER: ANSI	Q.A.			COMMENTS:	
		MATERIAL					
NEXT ASSY	USED ON	FINISH					
APPLICATION		DO NOT SCALE DRAWING					

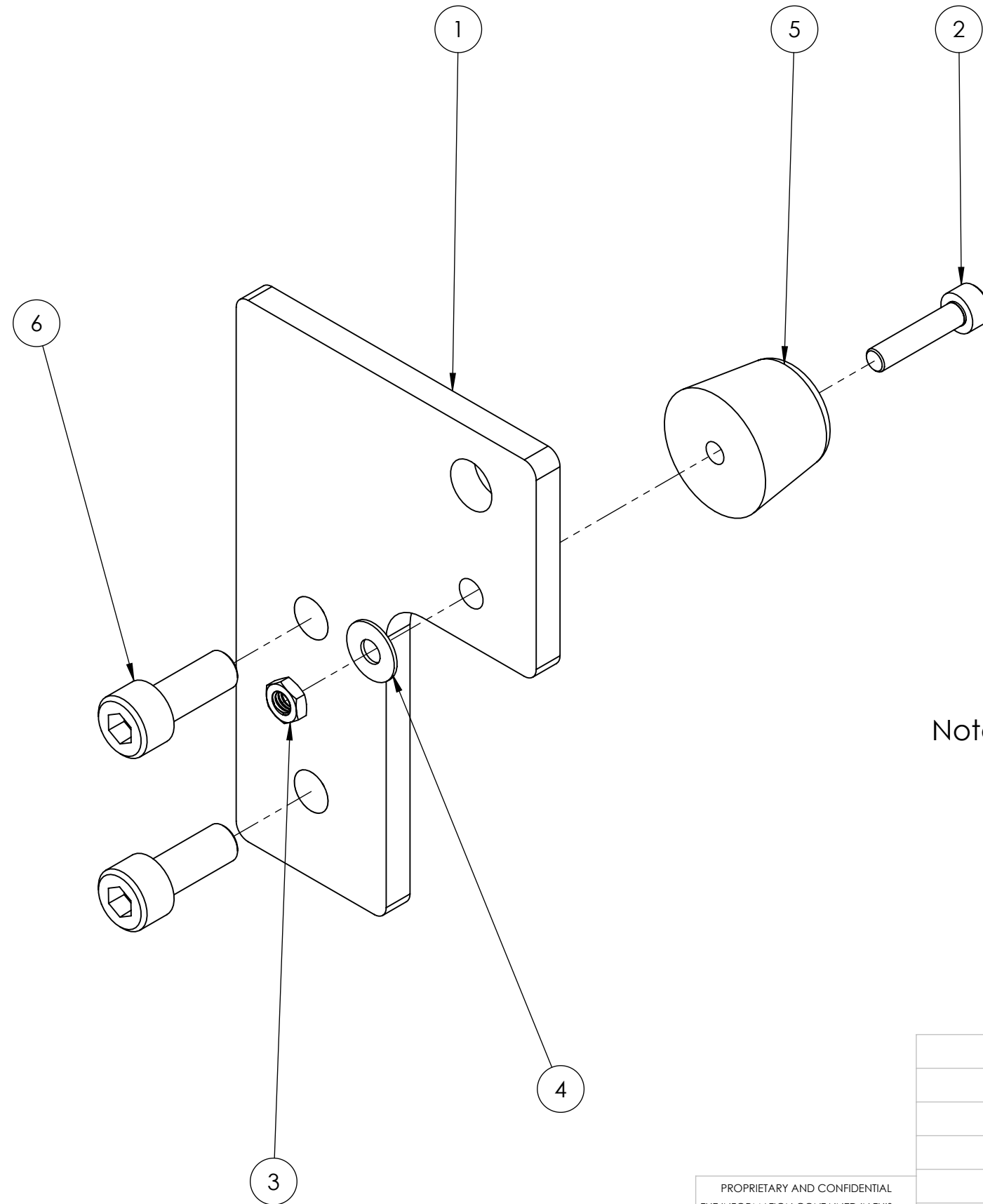


ITEM NO.	PART NUMBER	DESCRIPTION	QTY.
1	TNR-M8	T-Nut, Roll-in Ball, M8	2
2	CRP400-01-500	V-Con Rail Clamp	1
3	SK-M8-20	M8 x 20mm Socket Head Cap Screw	2
4	SS-CP-M8-8	M8 x 8mm Set Screw, Cone Point	2


PROPRIETARY AND CONFIDENTIAL
THE INFORMATION CONTAINED IN THIS
DRAWING IS THE SOLE PROPERTY OF
CNC ROUTER PARTS.
ANY REPRODUCTION IN PART OR AS A
WHOLE WITHOUT THE WRITTEN PERMISSION
OF CNC ROUTER PARTS IS PROHIBITED.

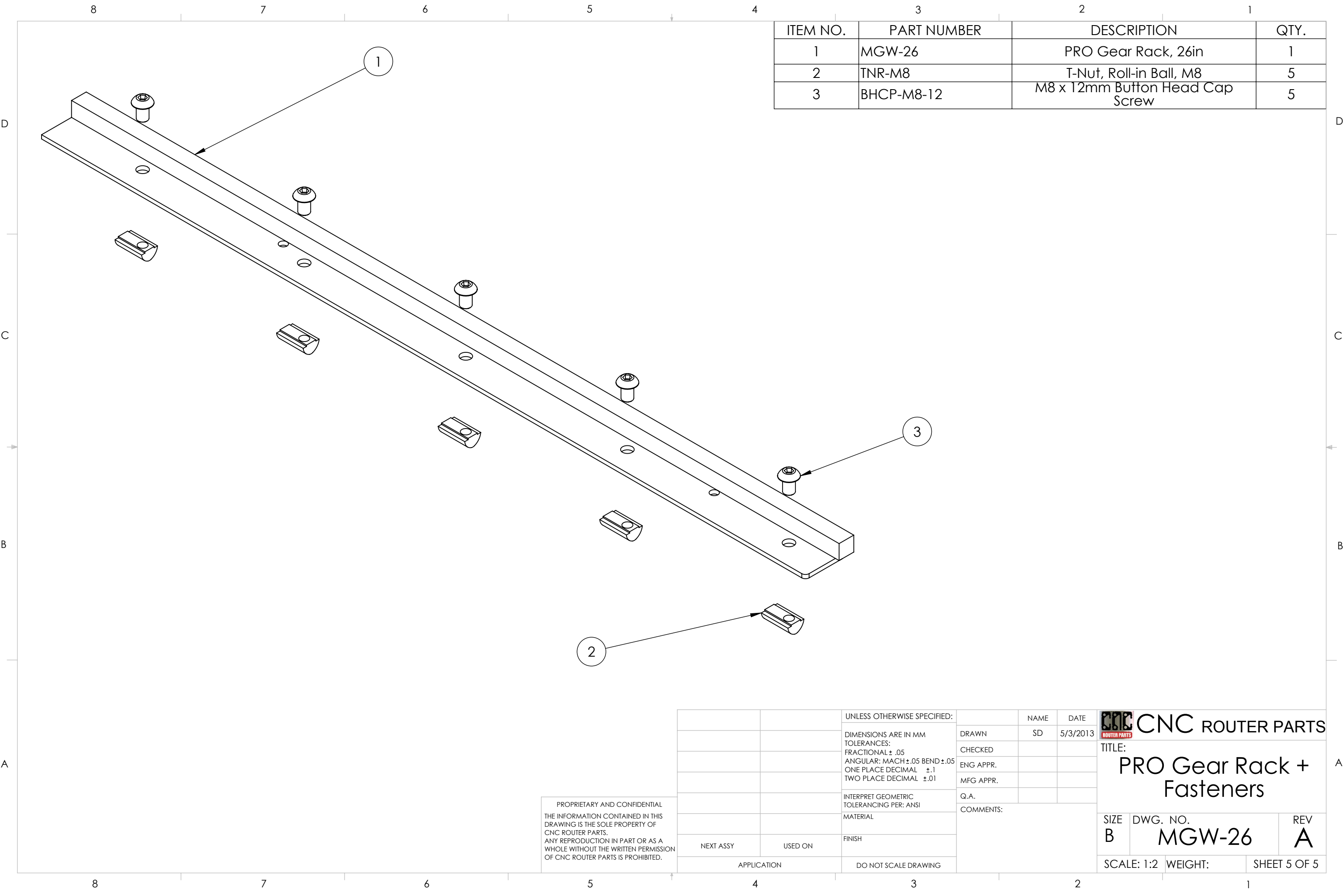
		UNLESS OTHERWISE SPECIFIED:		NAME	DATE	 CNC ROUTER PARTS		
		DIMENSIONS ARE IN MM TOLERANCES: FRACTIONAL ± .05 ANGULAR: MACH ±.05 BEND ±.05 ONE PLACE DECIMAL ±.1 TWO PLACE DECIMAL ±.01	DRAWN	SD	5/3/2013	TITLE: V-Con Rail Clamp Assembly		
			CHECKED					
			ENG APPR.					
			MFG APPR.					
		INTERPRET GEOMETRIC TOLERANCING PER: ANSI	Q.A.			SIZE DWG. NO. REV B CRP400-01-00-LF A		
		MATERIAL	COMMENTS:					
		FINISH						
NEXT ASSY	USED ON							
APPLICATION		DO NOT SCALE DRAWING				SCALE: 1:1 WEIGHT: SHEET 3 OF 5		

ITEM NO.	PART NUMBER	DESCRIPTION	QTY.
1	CRP412-01	PRO Bumper Bracket	1
2	SK-M5-22	M5 x 22mm Socket Head Cap Screw	1
3	HNJ-M5	Hex Nut Jam, M5	1
4	FW-1032	10-32 Flat Washer	1
5	9540K62	1-1/16" 70 Shore Bumper	1
6	SK-M8-20	M8 x 20mm Socket Head Cap Screw	2




Note: This assembly will need to be mirrored for certain placements

PROPRIETARY AND CONFIDENTIAL THE INFORMATION CONTAINED IN THIS DRAWING IS THE SOLE PROPERTY OF CNC ROUTER PARTS. ANY REPRODUCTION IN PART OR AS A WHOLE WITHOUT THE WRITTEN PERMISSION OF CNC ROUTER PARTS IS PROHIBITED.			UNLESS OTHERWISE SPECIFIED:		NAME	DATE	<div>CNC ROUTER PARTS</div> <div>TITLE: PRO X Axis Bumper Kit</div> <div><div>SIZE B</div><div>DWG. NO. CRP412-00</div><div>REV A</div></div> <div><div>SCALE: 1:1</div><div>WEIGHT:</div><div>SHEET 4 OF 5</div></div>		
			DIMENSIONS ARE IN INCHES TOLERANCES: FRACTIONAL ± .05 ANGULAR: MACH ±.05 BEND ±.05 TWO PLACE DECIMAL ±.01 THREE PLACE DECIMAL ±.001	DRAWN	SD	5/3/2013			
				CHECKED					
				ENG APPR.					
				MFG APPR.					
			INTERPRET GEOMETRIC TOLERANCING PER: ANSI	Q.A.					
			MATERIAL	COMMENTS:					
	NEXT ASSY	USED ON	FINISH						
	APPLICATION		DO NOT SCALE DRAWING						



ITEM NO.	PART NUMBER	DESCRIPTION	QTY.
1	MGW-26	PRO Gear Rack, 26in	1
2	TNR-M8	T-Nut, Roll-in Ball, M8	5
3	BHCP-M8-12	M8 x 12mm Button Head Cap Screw	5

PROPRIETARY AND CONFIDENTIAL
THE INFORMATION CONTAINED IN THIS
DRAWING IS THE SOLE PROPERTY OF
CNC ROUTER PARTS.
ANY REPRODUCTION IN PART OR AS A
WHOLE WITHOUT THE WRITTEN PERMISSION
OF CNC ROUTER PARTS IS PROHIBITED.

		UNLESS OTHERWISE SPECIFIED:		NAME	DATE	<div>CNC ROUTER PARTS</div> <div>TITLE: PRO Gear Rack + Fasteners</div>		
		DIMENSIONS ARE IN MM TOLERANCES: FRACTIONAL ± .05 ANGULAR: MACH ±.05 BEND ±.05 ONE PLACE DECIMAL ±.1 TWO PLACE DECIMAL ±.01	DRAWN	SD	5/3/2013			
			CHECKED					
			ENG APPR.					
			MFG APPR.					
		INTERPRET GEOMETRIC TOLERANCING PER: ANSI	Q.A.			<div>SIZE B</div> <div>DWG. NO. MGW-26</div> <div>REV A</div>		
		MATERIAL	COMMENTS:					
		FINISH						
NEXT ASSY	USED ON					SCALE: 1:2		
APPLICATION		DO NOT SCALE DRAWING				WEIGHT:		SHEET 5 OF 5